



# Denmarks Renewable Energy Island

A 10 year development plan for  
100% renewable energy



Hesja!  
Hello!

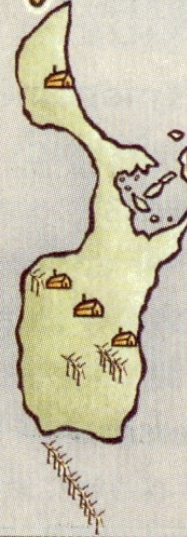


Welcome to...

# The Energy Island!

SØREN  
Director,  
Samsø Energy Academy

In 1997, we pledged to give up fossil fuels  
and convert to 100% renewable energy  
by 2008.



## SAMSØ ISLAND

Country: Denmark

Population: over 4000

Area: 114 square kilometres

Location: about 20 kilometres off  
Denmark's main peninsula

### LEGEND



Heating  
Plant



Wind  
Turbine

**In 1997 we pledged to give up fossil fuels  
and convert to 100% renewable energy.**





**Øens stemmer**

**Island Voices**



*Lokale på tur i Strandbakkene*

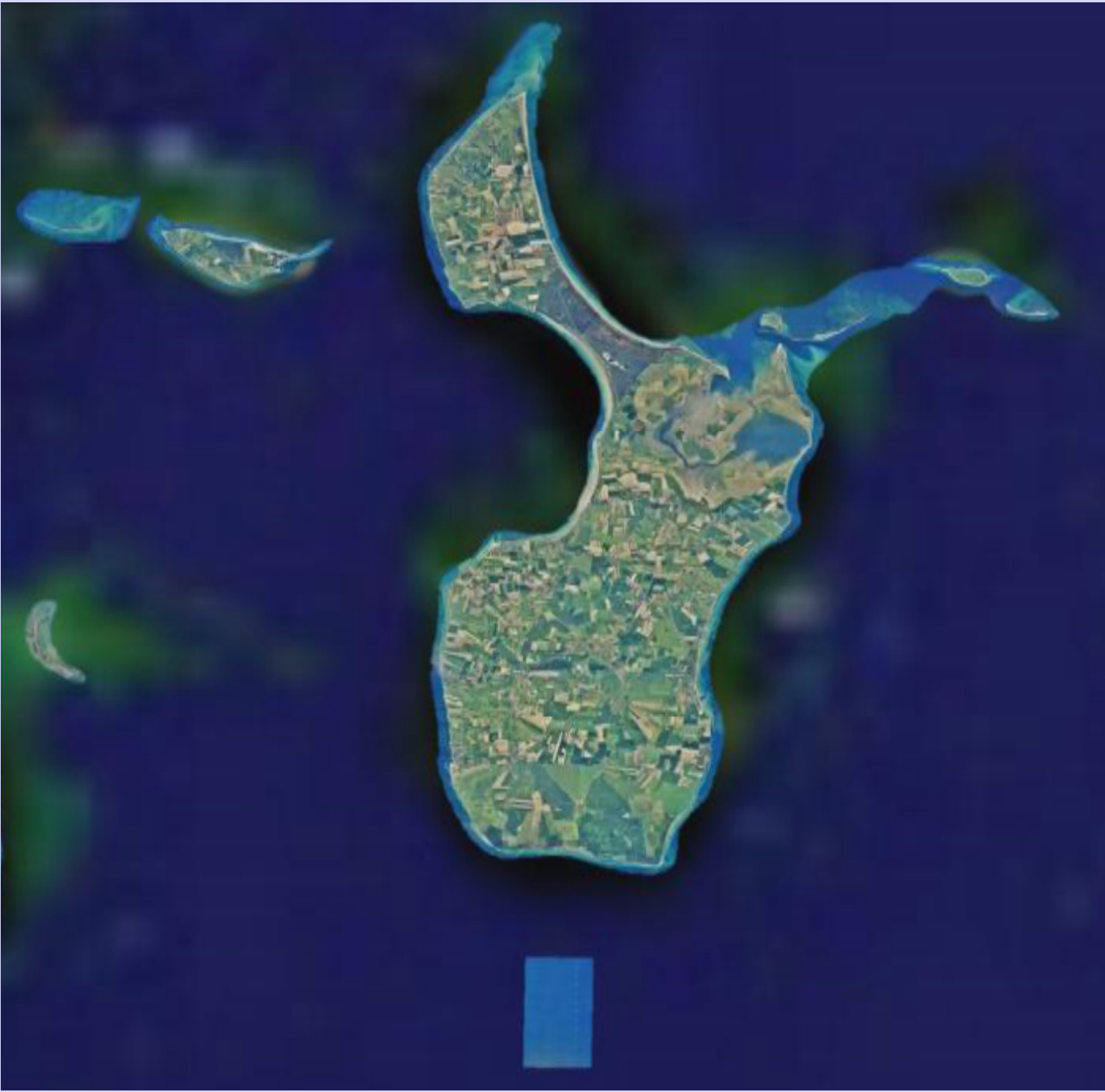
*Locals on a trip in  
the Strandbakke-hills*



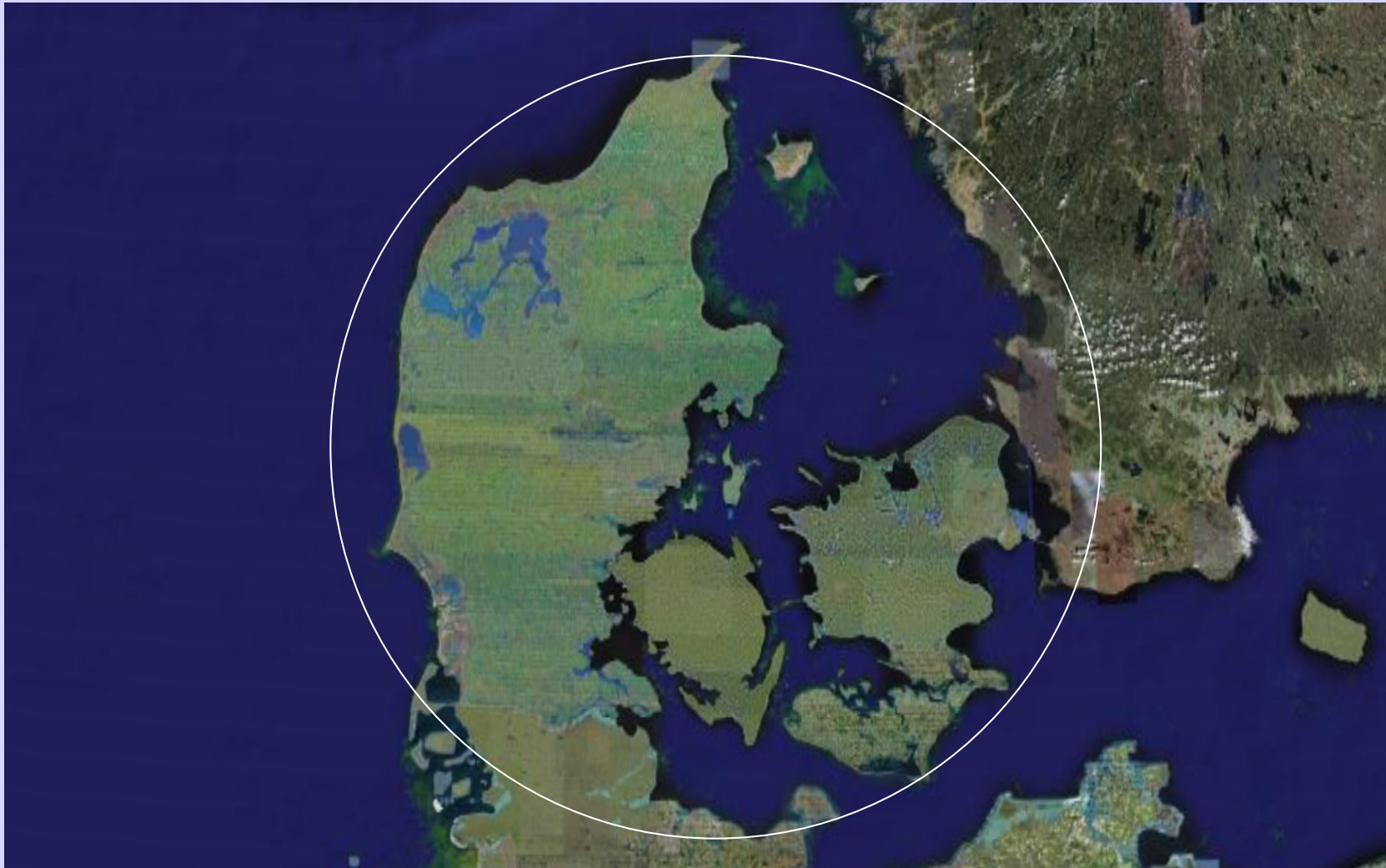






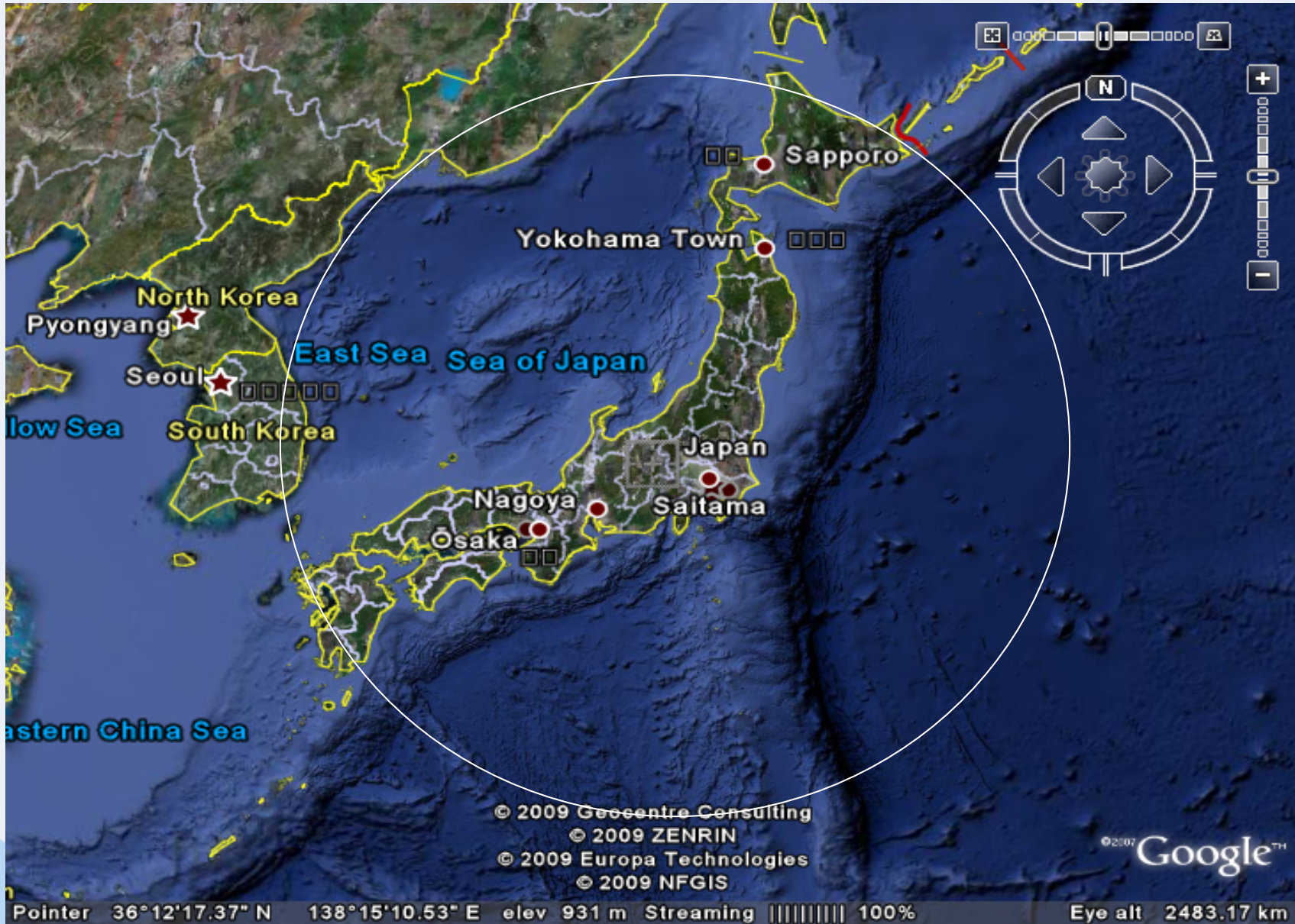


# In the center of Denmark





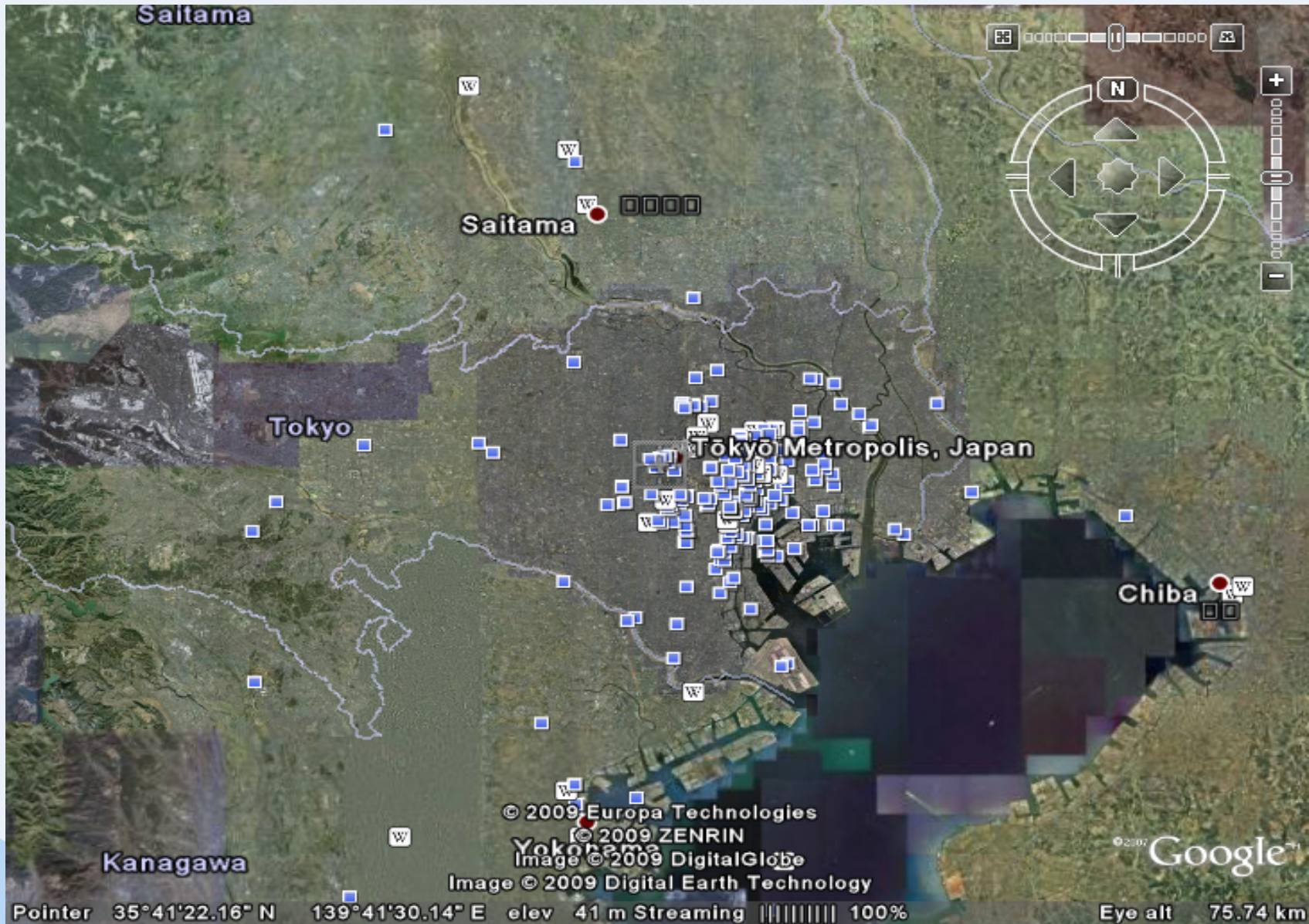




© 2009 Geocentre Consulting  
© 2009 ZENRIN  
© 2009 Europa Technologies  
© 2009 NFGIS

© 2007 Google™

Pointer 36°12'17.37" N 138°15'10.53" E elev 931 m Streaming 100% Eye alt 2483.17 km



# Background and organization

- Survival of the island
- New strategy
- More jobs
- Local economy
- Independence
- CO<sub>2</sub> neutral
- Energy democracy
- Local activity!!





-Implementing renewable energy in local action plans needs:

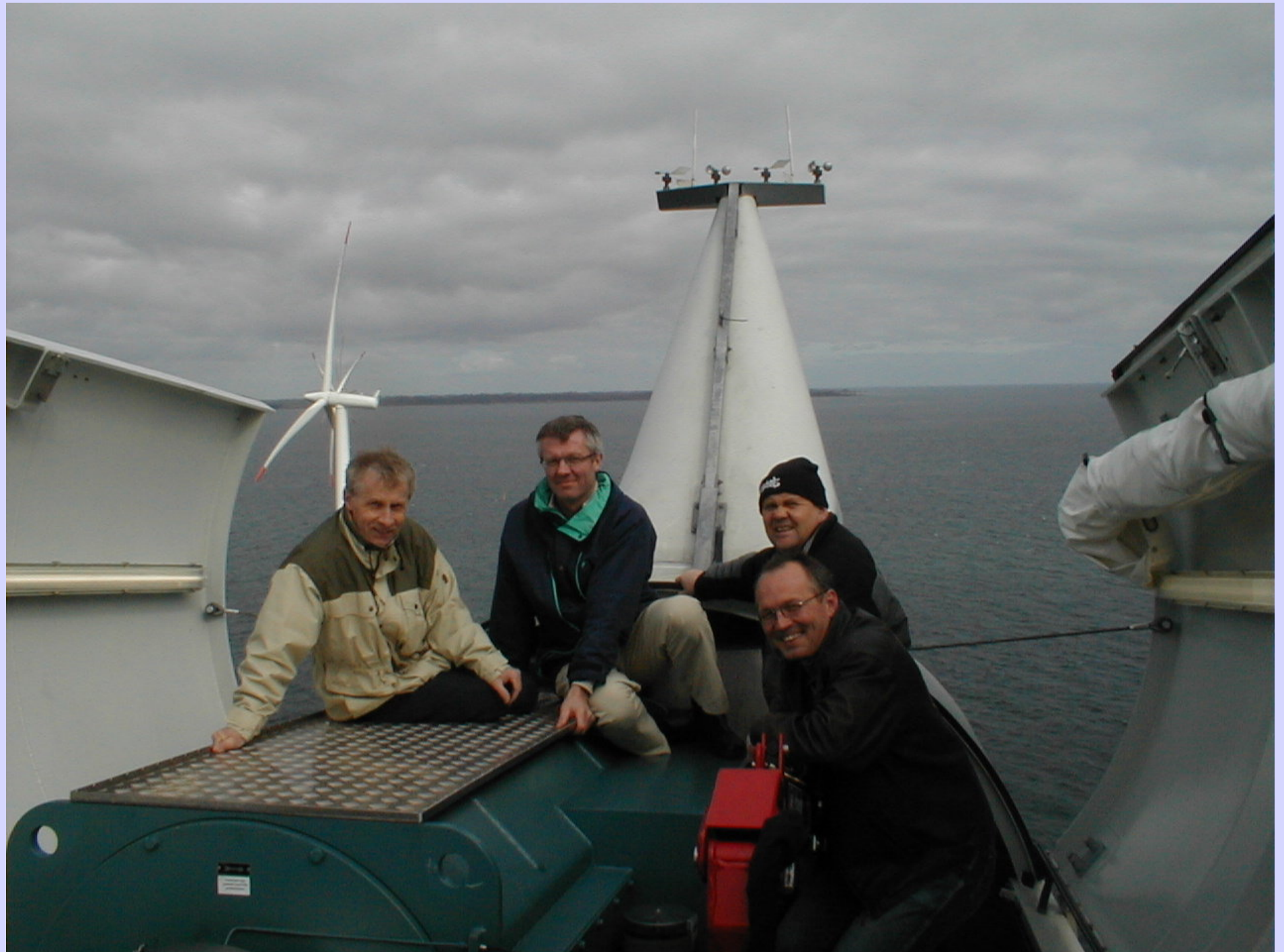
-National targets based on feed-in tariffs and legislation agreements

-Municipal long term agreements – not only a 4-year election period!

- Investment capital from local action to co-finance EU/ National framework









# Local heating

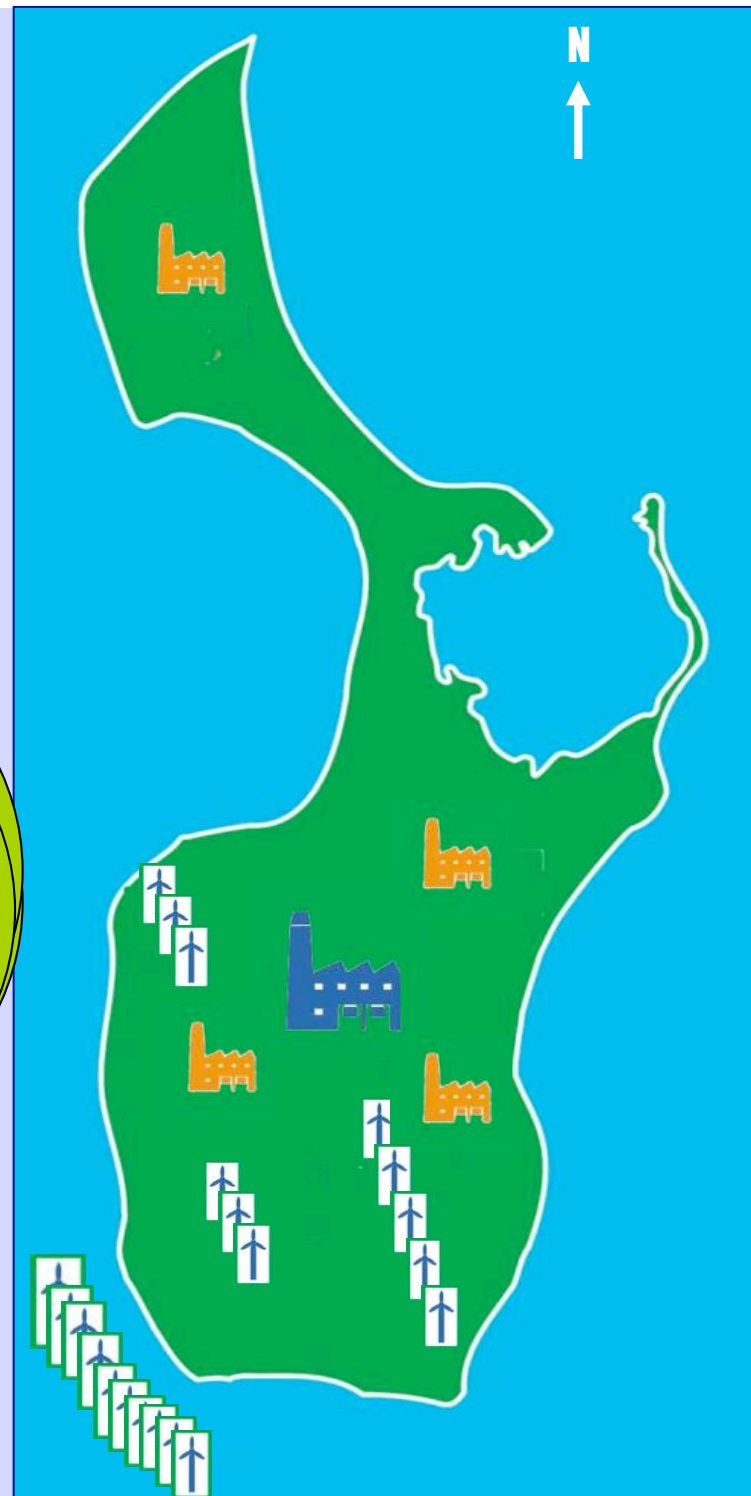


## RE Development

District heating:

Windpower:

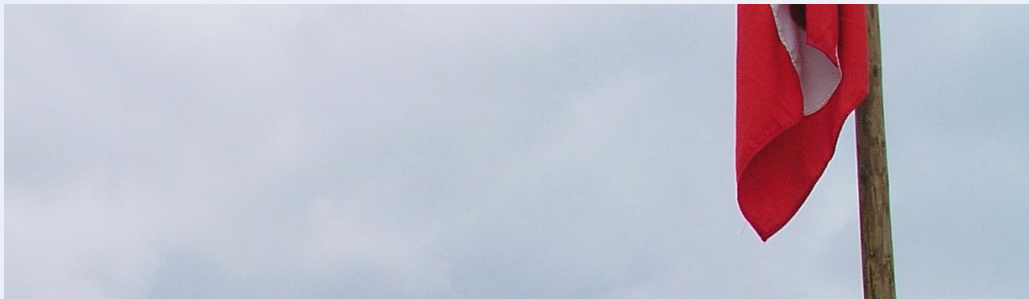
Total CO<sub>2</sub> reduction:  
140 %



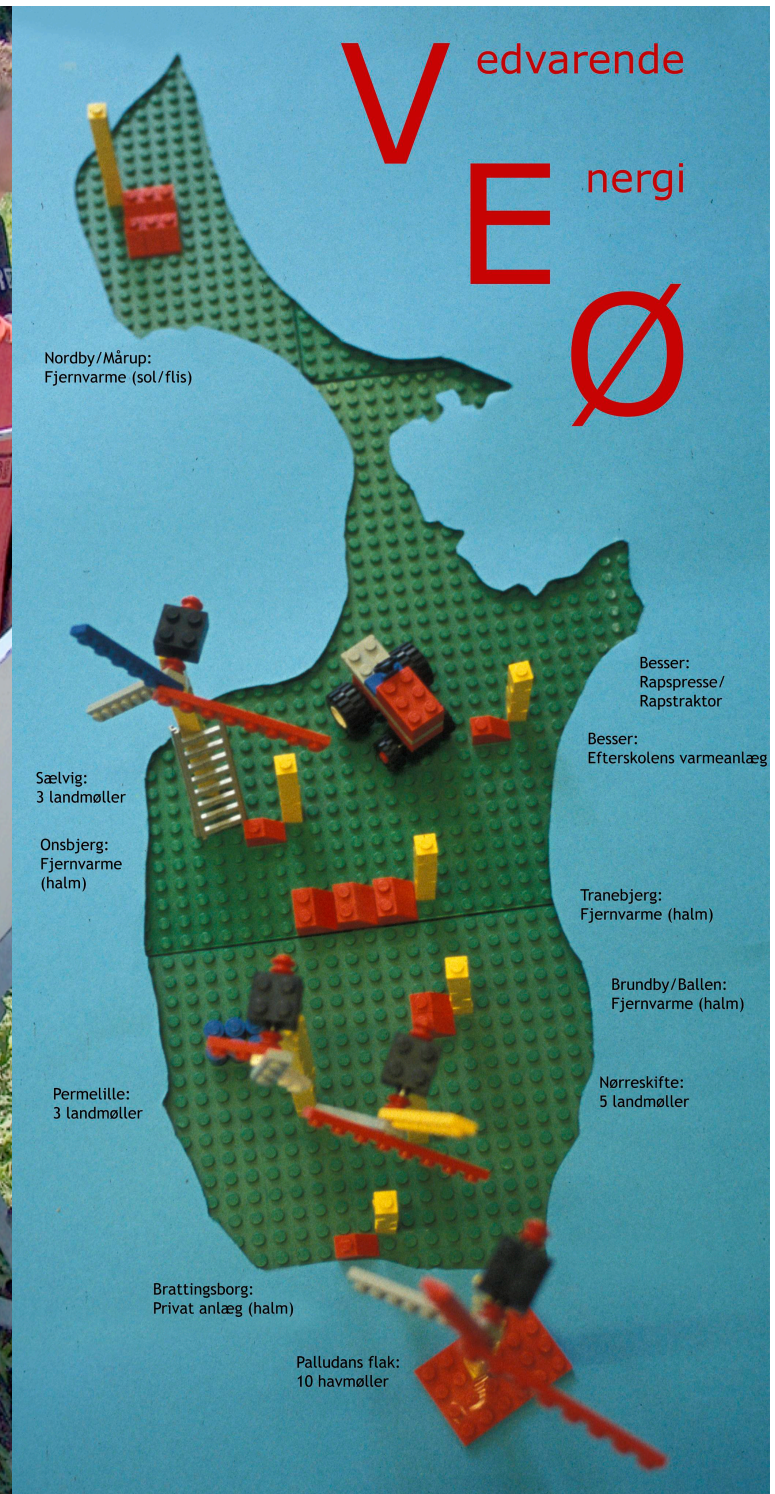








**SAMSØ**  
ENERGIKADEMI







# Investment and Economy

## 1998 cost of imported energy

- 11 million US \$ energy import cost

## Investments

- 84 million US \$ invested in 10 years
- 72 million US \$ from citizens, local households, companies, municipality and energy company
- 12 million US \$ from national and EU framework





SAMSØ

JYLLAND

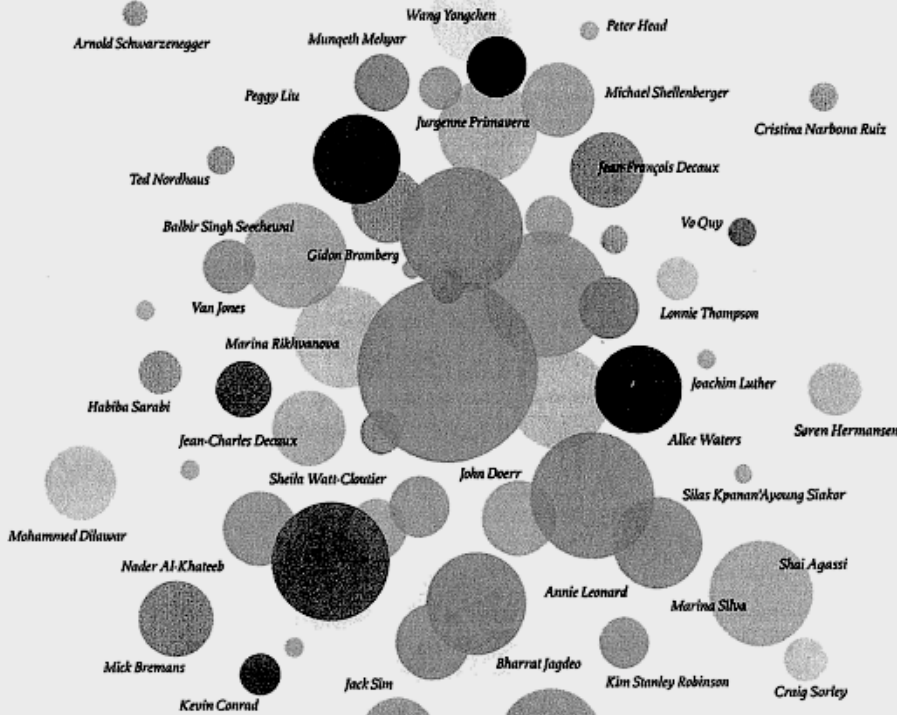


SPONGA



# Heroes of the Environment

# TIME



**SPECIAL REPORT**  
 Our annual celebration  
 of the people who are  
 changing our world



# Local ownership- real heroes



# Information og contact:

Samsø Energiakademi

Strandengen 1

DK-8305 Samsø

Phone: +45 87 92 10 11

E-mail: [info@energiakademiet.dk](mailto:info@energiakademiet.dk)

Homepage: [www.energiakademiet.dk](http://www.energiakademiet.dk)

Links: [www.cop15.dk](http://www.cop15.dk)

[www.ens.dk](http://www.ens.dk)

[www.concept-for-hire.dk/wind](http://www.concept-for-hire.dk/wind)

[www.samsøhavvind.dk](http://www.samsøhavvind.dk)